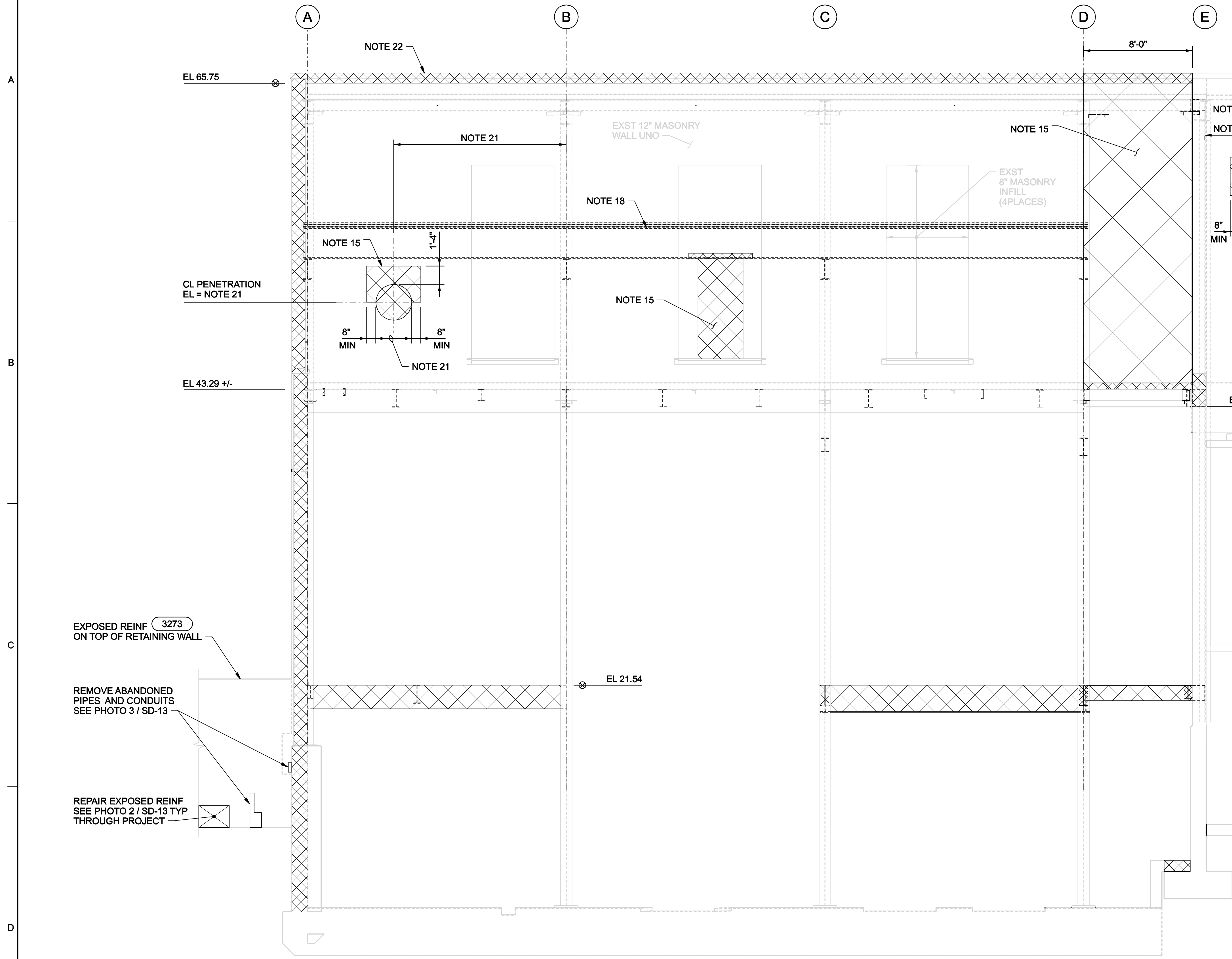


1 2 3 4 5 6



CONTRACTOR TO FIELD VERIFY ALL DIMENSIONS PRIOR TO INITIATING ANY DEMOLITION OR OTHER WORK INCLUDING ORDERING MATERIALS.

EXPOSED REINF (3273) ON TOP OF RETAINING WALL

REMOVE ABANDONED PIPES AND CONDUITS SEE PHOTO 3 / SD-13

REPAIR EXPOSED REINF SEE PHOTO 2 / SD-13 TYP THROUGH PROJECT

**LEGEND:**  
 INDICATES DEMOLISH ELEMENTS. SCALE OF HATCH MAY VARY TO DIFFERENTIATE BETWEEN DEMOLITION OF LARGER AND SMALLER ELEMENTS.

**NOTES:**  
 SEE DRAWING SD-6 FOR NOTES 1 THROUGH 20.  
 21. COORDINATE SIZE AND LOCATION OF PENETRATION WITH MECHANICAL AND / OR EQUIPMENT MFG.  
 22. REMOVE EXISTING COPING AND MASONRY DOWN TO EL 65.75.

THESE RECORD DOCUMENTS HAVE BEEN PREPARED BASED ON THE INFORMATION PROVIDED BY OTHERS. THE DESIGN PROFESSIONAL HAS NOT VERIFIED THE ACCURACY AND/OR COMPLETENESS OF THIS INFORMATION AND SHALL NOT BE RESPONSIBLE FOR ANY ERRORS OR OMISSIONS WHICH MAY BE INCORPORATED HEREIN AS A RESULT.

**E SECTION**  
 1/4"=1'-0"  
 SD-4

		RECORD DRAWING		APVD	B. GACKSTATTER
		RE-ISSUED FOR CONSTRUCTION		BY	
STAMFORD WATER POLLUTION CONTROL AUTHORITY SOLIDS DRYING PROJECT		ISSUED FOR CONSTRUCTION		MC	BG
STRUCTURAL DEMOLITION SECTION ALONG COLUMN LINE 4		FOR FINAL REVIEW/ BUILDING PERMIT		BY	BG
DATE		NO.		REVISION	
01/20/08		3		DR	
09/08/06		2		CHK	
07/04/06		1		M. GOODSON	
06/19/06		0		A. CHADHA	
DGN		M. CHREZANOWSKI		APVD	
M. CHREZANOWSKI		M. GOODSON		B. GACKSTATTER	
REUSE OF DOCUMENTS: THIS DOCUMENT AND THE IDEAS AND DESIGNS INCORPORATED HEREIN, AS AN INSTRUMENT OF PROFESSIONAL SERVICE, IS THE PROPERTY OF CH2M HILL AND IS NOT TO BE USED, IN WHOLE OR IN PART, FOR ANY OTHER PROJECT WITHOUT THE WRITTEN AUTHORIZATION OF CH2M HILL. © CH2M HILL 2004. ALL RIGHTS RESERVED.					
VERIFY SCALE		DATE		JUNE 2006	
BAR IS ONE INCH ON ORIGINAL DRAWING.		PROJ		334058	
0 1'		DWG		SD-11	
		SHEET		S10	