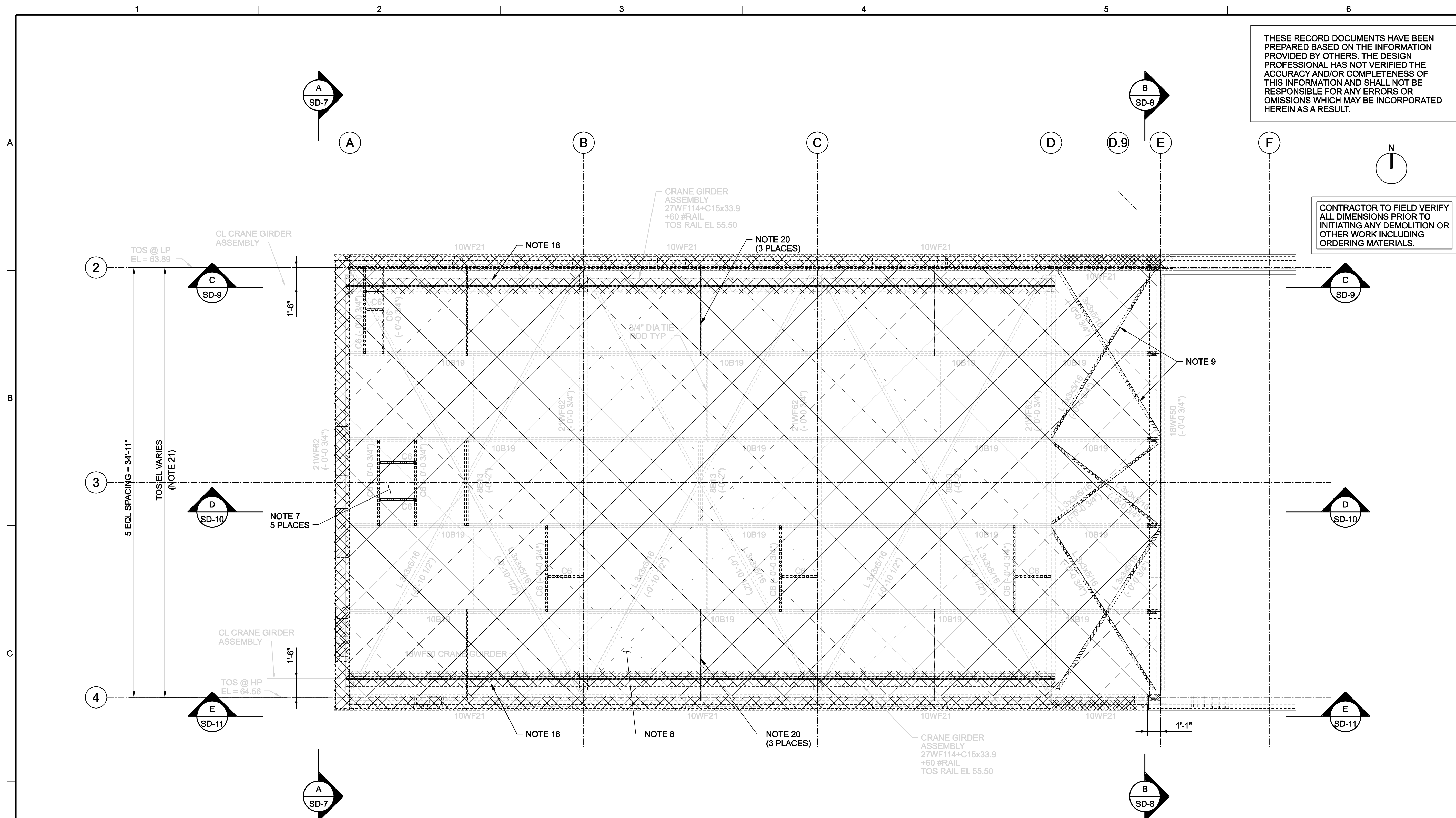


THESE RECORD DOCUMENTS HAVE BEEN PREPARED BASED ON THE INFORMATION PROVIDED BY OTHERS. THE DESIGN PROFESSIONAL HAS NOT VERIFIED THE ACCURACY AND/OR COMPLETENESS OF THIS INFORMATION AND SHALL NOT BE RESPONSIBLE FOR ANY ERRORS OR OMISSIONS WHICH MAY BE INCORPORATED HEREIN AS A RESULT.

CONTRACTOR TO FIELD VERIFY ALL DIMENSIONS PRIOR TO INITIATING ANY DEMOLITION OR OTHER WORK INCLUDING ORDERING MATERIALS.



DEMOLITION PLAN AT HIGH ROOF
1/4"=1'-0"

LEGEND:
 INDICATES DEMOLISH ELEMENTS. SCALE OF HATCH MAY VARY TO DIFFERENTIATE BETWEEN DEMOLITION OF LARGER AND SMALLER ELEMENTS.

NOTES:

- REMOVE EXISTING CAST-IN-PLACE CONCRETE SLAB. SEE NOTE 14.
- REMOVE EXISTING FRAMING.
- REMOVE EXISTING STAIR. SEE PHOTO 7 / SD-13.
- REMOVE EXISTING COVER PLATES.
- REMOVING EXISTING HANDRAIL AND CONCRETE CURB.
- DEMOLISH EXISTING CONCRETE PILE CAPS AND WOOD PILES ABOVE ELEVATION 10.00, AFTER NEW MAIN FLOOR SLAB IN BUILDING INSTALLED.
- REMOVE EXISTING ROOF VENTS, DRAINS, AND MISCELLANEOUS FRAMING AROUND OPENINGS.
- REMOVE EXISTING 3" PRECAST CONCRETE ROOF PLANKS. STEEL ROOF FRAMING TO REMAIN.
- REMOVE EXISTING BRACES ONLY AFTER INSTALLATION OF NEW METAL ROOF DECK IS COMPLETE, AND CONCRETE FLOOR AT ELECTRICAL ROOM HAS REACHED A STRENGTH OF 3000 PSI.
- AFTER DEMOLITION OF FRAMING ABOVE, REMOVE CONCRETE WALL ABOVE ELEVATION 9.0. SEE NOTE 14.
- INSTALL TEMPORARY BRACING ALONG COLUMN LINES "A" THROUGH "D" BEFORE REMOVING EXISTING BRACING.
- REMOVING CONCRETE WALL ABOVE ELEVATION 40.75. DO NOT DAMAGE EXISTING VERTICAL REINFORCING STEEL BELOW EL 43.29.
- REMOVING CONCRETE WALL ABOVE ELEVATION 41.50. DO NOT DAMAGE EXISTING VERTICAL REINFORCING STEEL BELOW EL 43.29.
- SEE STANDARD DETAIL 3273 FOR CONCRETE DEMOLITION.
- REMOVE EXISTING CONCRETE AND MASONRY.
- DO NOT DEMOLISH THIS BEAM UNTIL NEW BEAMS AND BRACING ARE INSTALLED ALONG THIS COLUMN LINE.
- ABRASIVE BLAST EXPOSED PORTIONS OF EMBEDDED STEEL TO REMOVE ALL OXIDATION. PREPARE EXPOSED STEEL AND CONCRETE SURFACE WITHIN 6 INCHES OF EXPOSED STEEL PER MANUFACTURER'S RECOMMENDATIONS AND THEN APPLY TWO COATS OF SIKAGARD 82.
- REMOVE EXISTING CRANE GIRDER AND APPURTENANCES.
- DEMOLISH EXISTING CONCRETE LEDGE (SEE NOTE 14), SEE PHOTO 4 / SD-13.
- REMOVE EXISTING TIE RODS.
- (X'-Y') IS TOP OF STEEL MEASURED FROM REFERENCED ELS.

		RECORD DRAWING		APVD	B. GACKSTATTER
		RE-ISSUED FOR CONSTRUCTION		BY	BG
		ISSUED FOR CONSTRUCTION		BY	BG
		FOR FINAL REVIEW/ BUILDING PERMIT		BY	BG
STAMFORD WATER POLLUTION CONTROL AUTHORITY SOLIDS DRYING PROJECT		NO.	DATE	DR	APVD
STRUCTURAL DEMOLITION PLAN AT HIGH ROOF		3	01/20/08	M. CHERZANOWSKI	M. GOODSON
		2	09/09/06	A. CHADHA	
		1	07/04/06		
		0	06/05/06		
REUSE OF DOCUMENTS: THIS DOCUMENT AND THE IDEAS AND DESIGNS INCORPORATED HEREIN, AS AN INSTRUMENT OF PROFESSIONAL SERVICE, IS THE PROPERTY OF CH2M HILL AND IS NOT TO BE USED, IN WHOLE OR IN PART, FOR ANY OTHER PROJECT WITHOUT THE WRITTEN AUTHORIZATION OF CH2M HILL. © CH2M HILL 2004. ALL RIGHTS RESERVED.					
VERIFY SCALE BAR IS ONE INCH ON ORIGINAL DRAWING.		DATE: JUNE 2006 PROJ: 334058 DWG: SD-6 SHEET: S5			