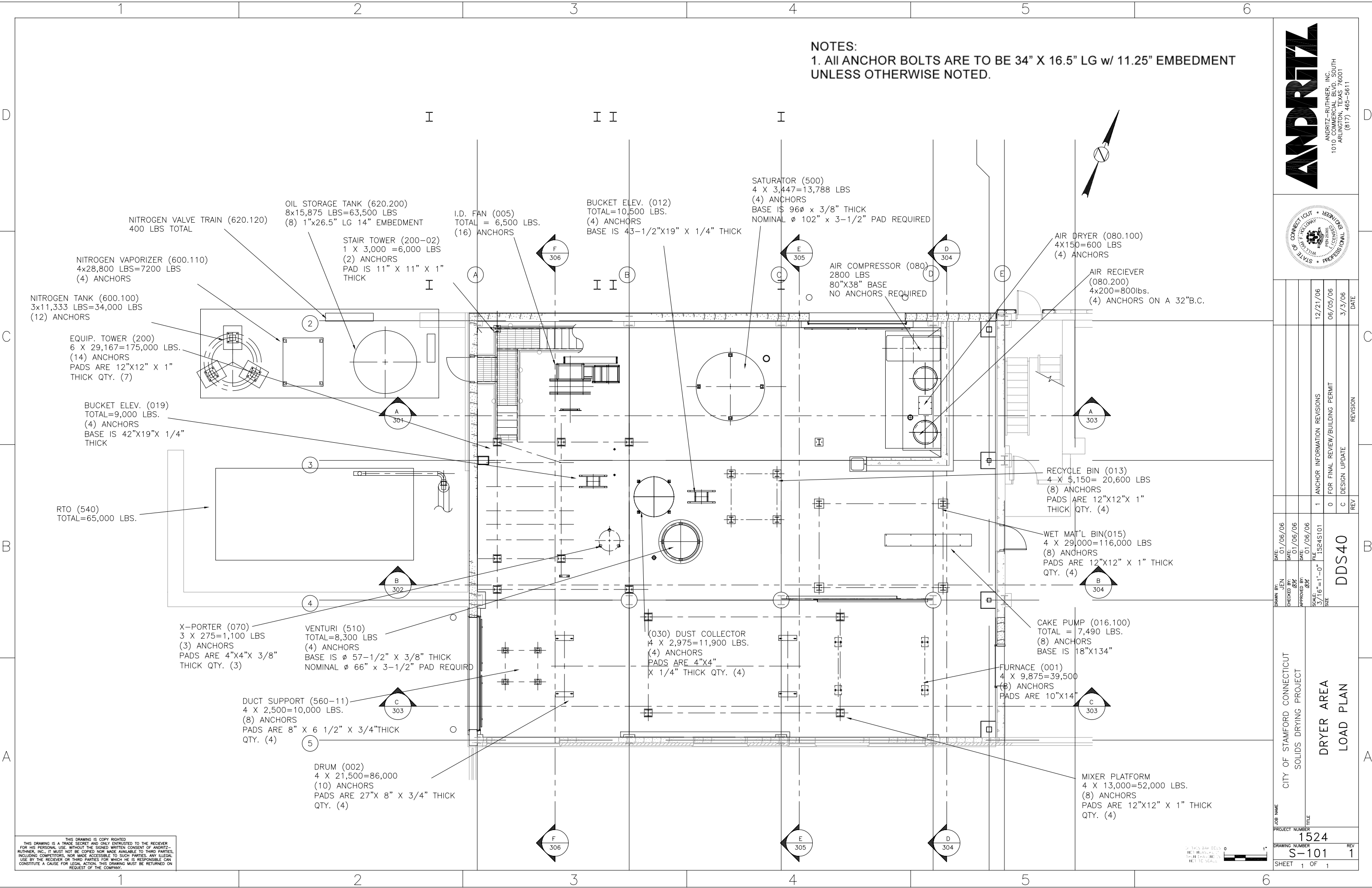


NOTES:
 1. All ANCHOR BOLTS ARE TO BE 3/4" X 16.5" LG w/ 11.25" EMBEDMENT UNLESS OTHERWISE NOTED.



DATE	REVISION
12/21/06	ANCHOR INFORMATION REVISIONS
06/05/06	FOR FINAL REVIEW/BUILDING PERMIT
3/3/06	DESIGN UPDATE

DATE: 01/06/06	DATE: 01/06/06	DATE: 01/06/06	DATE: 01/06/06
DRAWN BY: JEN	CHECKED BY: GJM	APPROVED BY: GJM	SCALE: 3/16"=1'-0"
PROJECT NUMBER: 1524	TITLE: DRYER AREA LOAD PLAN	JOB NAME: CITY OF STAMFORD CONNECTICUT SOLIDS DRYING PROJECT	PROJECT NUMBER: 1524
REVISION: 0	REVISION: C	REVISION: 1	REVISION: 1
REV: 0	REV: C	REV: 1	REV: 1
DATE: 01/06/06	DATE: 01/06/06	DATE: 01/06/06	DATE: 01/06/06
DRAWN BY: JEN	CHECKED BY: GJM	APPROVED BY: GJM	SCALE: 3/16"=1'-0"
PROJECT NUMBER: 1524	TITLE: DRYER AREA LOAD PLAN	JOB NAME: CITY OF STAMFORD CONNECTICUT SOLIDS DRYING PROJECT	PROJECT NUMBER: 1524
REVISION: 0	REVISION: C	REVISION: 1	REVISION: 1
REV: 0	REV: C	REV: 1	REV: 1
DATE: 01/06/06	DATE: 01/06/06	DATE: 01/06/06	DATE: 01/06/06
DRAWN BY: JEN	CHECKED BY: GJM	APPROVED BY: GJM	SCALE: 3/16"=1'-0"
PROJECT NUMBER: 1524	TITLE: DRYER AREA LOAD PLAN	JOB NAME: CITY OF STAMFORD CONNECTICUT SOLIDS DRYING PROJECT	PROJECT NUMBER: 1524
REVISION: 0	REVISION: C	REVISION: 1	REVISION: 1
REV: 0	REV: C	REV: 1	REV: 1
DATE: 01/06/06	DATE: 01/06/06	DATE: 01/06/06	DATE: 01/06/06
DRAWN BY: JEN	CHECKED BY: GJM	APPROVED BY: GJM	SCALE: 3/16"=1'-0"
PROJECT NUMBER: 1524	TITLE: DRYER AREA LOAD PLAN	JOB NAME: CITY OF STAMFORD CONNECTICUT SOLIDS DRYING PROJECT	PROJECT NUMBER: 1524
REVISION: 0	REVISION: C	REVISION: 1	REVISION: 1
REV: 0	REV: C	REV: 1	REV: 1

THIS DRAWING IS COPY RIGHTED. THIS DRAWING IS A TRADE SECRET AND ONLY ENTRUSTED TO THE RECEIVER FOR HIS PERSONAL USE. WITHOUT THE SIGNED WRITTEN CONSENT OF ANDRITZ-RUTHNER, INC., IT MUST NOT BE COPIED NOR MADE AVAILABLE TO THIRD PARTIES, INCLUDING COMPETITORS, NOR MADE ACCESSIBLE TO SUCH PARTIES. ANY LEGAL USE BY THE RECEIVER OR THIRD PARTIES FOR WHICH HE IS RESPONSIBLE CAN CONSTITUTE A CAUSE FOR LEGAL ACTION. THIS DRAWING MUST BE RETURNED ON REQUEST OF THE COMPANY.

