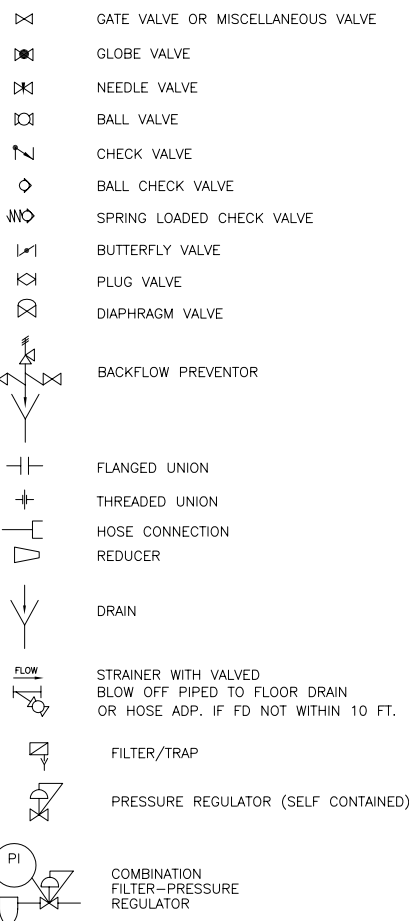
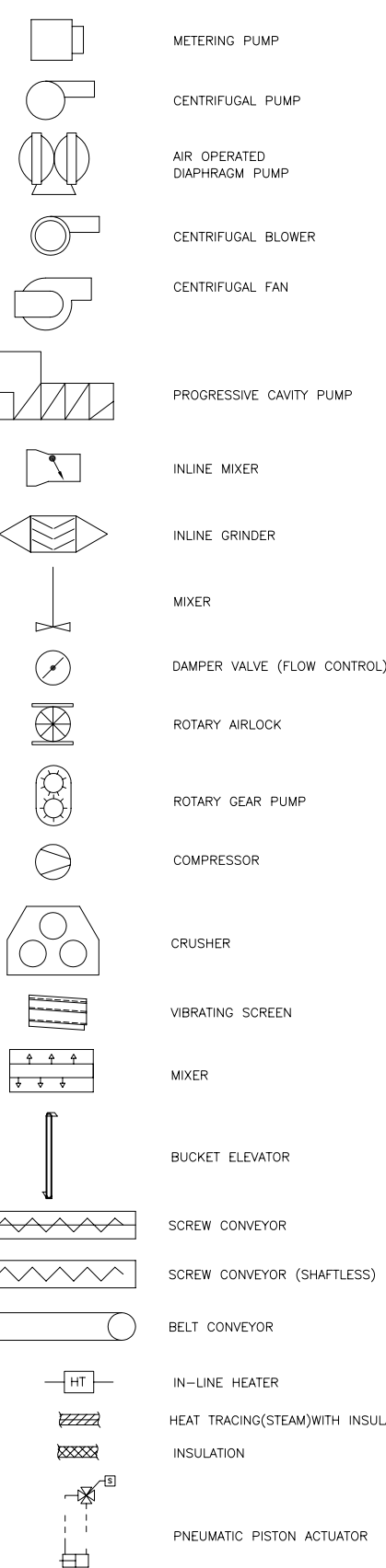
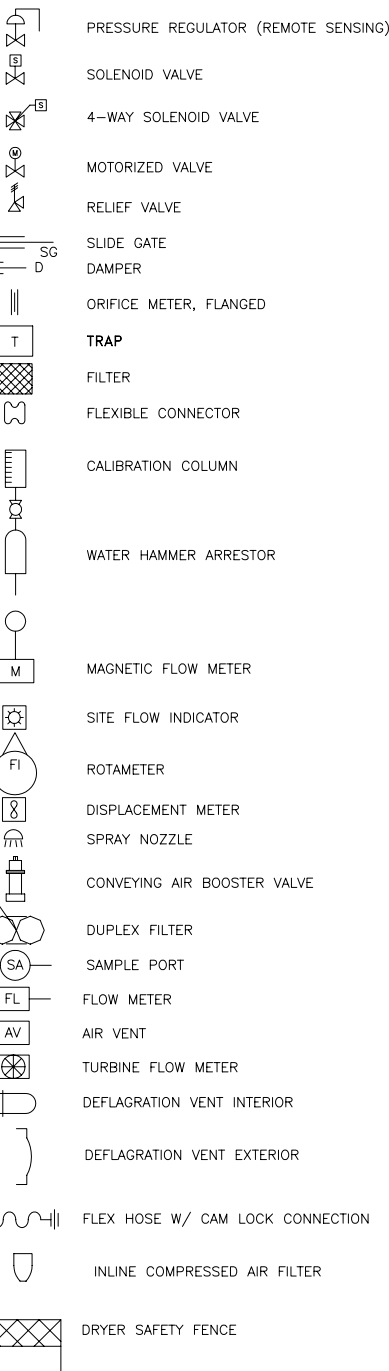


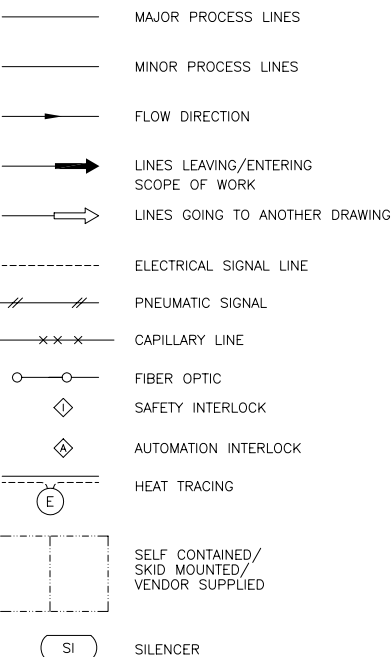
PROCESS SYMBOLS (SEE NOTE 2)

EQUIPMENT SYMBOLS (SEE NOTE 2)

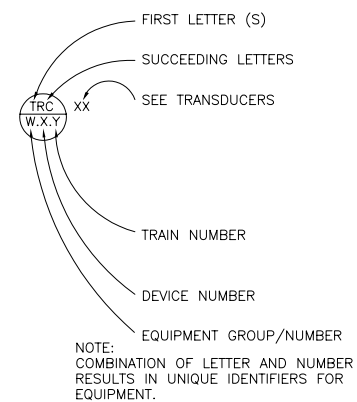
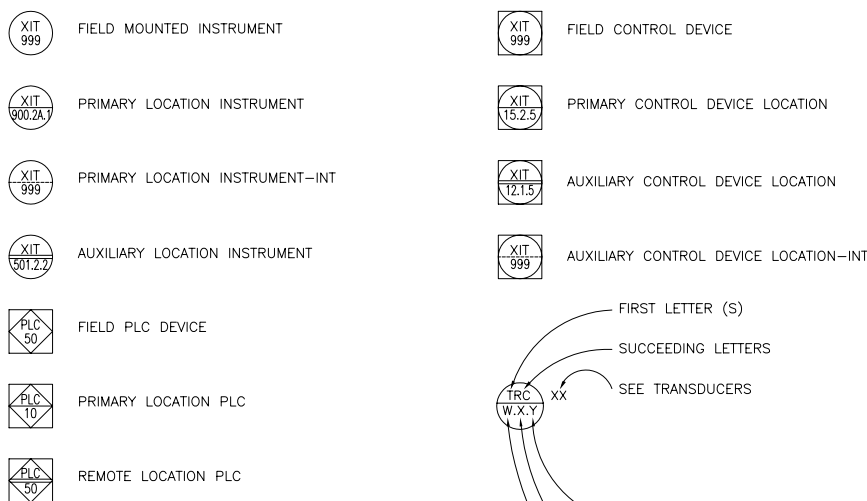
PIPING SYMBOLS (SEE NOTE 1)



LINE SYMBOLS



ISA INSTRUMENTATION IDENTIFICATION					
LETTER	FIRST-LETTER		SUCCEEDING-LETTERS		
	PROCESS OR INITIATING VARIABLE	MODIFIER	READOUT OR PASSIVE FUNCTION	OUTPUT FUNCTION	MODIFIER
A	ANALYSIS		ALARM		
B	BURNER, COMBUSTION				
C				CONTROL	
D	DENSITY (S,G)	DIFFERENTIAL			
E	VOLTAGE		PRIMARY ELEMENT		
F	FLOW RATE	RATIO			
G			GLASS, GAUGE VIEWING DEVICE	GATE	
H	HAND (MANUAL)				HIGH
I	CURRENT (ELECTRICAL)		INDICATE		
J	POWER	SCAN			
K	TIME, TIME SCHEDULE	TIME RATE OF CHANGE		CONTROL STATION	
L	LEVEL		LIGHT (PILOT)		LOW
M	MOTION	MOMENTARY			MIDDLE
N					
O			ORIFICE, RESTRICTION		
P	PRESSURE, VACUUM		POINT (TEST) CONNECTION		
Q	QUANTITY	INTEGRATE			
R	RADIATION		RECORD OR PRINT		
S	SPEED, FREQUENCY	SAFETY		SWITCH	
T	TEMPERATURE			TRANSMIT	
U	MULTIVARIABLE		MULTIFUNCTION	MULTIFUNCTION	MULTIFUNCTION
V	VIBRATION, MECH. ANALYSIS			VALVE, DAMPER LOUVER	
W	WEIGHT, FORCE		WELL		
X	UNCLASSIFIED	X AXIS	UNCLASSIFIED	UNCLASSIFIED	UNCLASSIFIED
Y	EVENT, STATE OR PRESENCE	Y AXIS		RELAY, COMPUTE, CONVERT	
Z	POSITION	Z AXIS		DRIVER, ACTUATOR UNCLASSIFIED FINAL CONTROL ELEMENT	



NOTE: COMBINATION OF LETTER AND NUMBER RESULTS IN UNIQUE IDENTIFIERS FOR EQUIPMENT.

NOTES:

- ALL DEVICES LISTED UNDER PIPING SYMBOLS TO BE PROVIDED BY THE CONSTRUCTION CONTRACTOR.
- ALL ITEMS LISTED UNDER PROCESS SYMBOLS AND EQUIPMENT SYMBOLS TO BE PROVIDED BY ANDRITZ.
- INSTRUMENTATION IDENTIFICATION CONFORMS TO ANSI/ISA-S5, 1-1984(R 1992) STANDARD.
- ALL I&C DEVICES TO BE FURNISHED BY ANDRITZ.
- ALL ITEMS FURNISHED BY ANDRITZ WILL BE INSTALLED BY THE CONSTRUCTION CONTRACTOR.
- HANGERS FOR PROCESS AIR DUCT FBA ARE FBCC.
- ALL I&C DEVICES MAY BE SHIPPED LOOSE FOR INSTALLATION BY THE CONSTRUCTION CONTRACTOR.
- ALL MANUAL VALVES ARE FBCC.

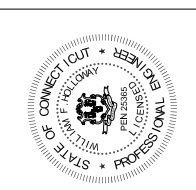
ABBREVIATIONS:

FURNISH AND INSTALLATION REQUIREMENTS

- FBA FURNISHED BY ANDRITZ
 FBCC FURNISHED BY CONSTRUCTION CONTRACTOR
 IBA INSTALLED BY ANDRITZ
 IBCC INSTALLED BY CONSTRUCTION CONTRACTOR

PIPING, DUCT AND CHUTE MATERIALS

- CPVC CHLORINATED POLYVINYL PIP
 CS CARBON STEEL
 CU COPPER - TYPE K
 DIP DUCTILE IRON PIPE
 GS GALVANIZED STEEL
 PVS POLYVINYL PIPE
 SS STAINLESS STEEL



DATE: 8/19/02	DATE:	DATE:	DATE:	DATE:	DATE:
DRAWN BY: DAN	CHECKED BY:	APPROVED BY:	SCALE: NONE	FILE: 1524P1001	SIZE:
PROJECT NUMBER: DDS40					REV: 0
FOR FINAL REVIEW/BUILDING PERMIT					REVISION

CITY OF STAMFORD CONNECTICUT
 SOLIDS DRYING PROJECT
MECHANICAL FLOW DIAGRAM
LEGEND
 JOB NAME: PROJECT NUMBER: 1524
 DRAWING NUMBER: PI-001
 SHEET 1 OF 1

THIS DRAWING IS A TRADE SECRET AND ONLY ENTRUSTED TO THE RECEIVER FOR HIS PERSONAL USE WITHOUT THE SIGNED WRITTEN CONSENT OF ANDRITZ-RUTHNER, INC. IT MUST NOT BE COPIED NOR MADE AVAILABLE TO THIRD PARTIES, INCLUDING COMPETITORS, NOR MADE ACCESSIBLE TO SUCH PARTIES. ANY ILLEGAL USE BY THE RECEIVER OR THIRD PARTIES FOR WHICH HE IS RESPONSIBLE CAN CONSTITUTE A CAUSE FOR LEGAL ACTION. THIS DRAWING MUST BE RETURNED ON REQUEST OF THE COMPANY.

