

NOTES:

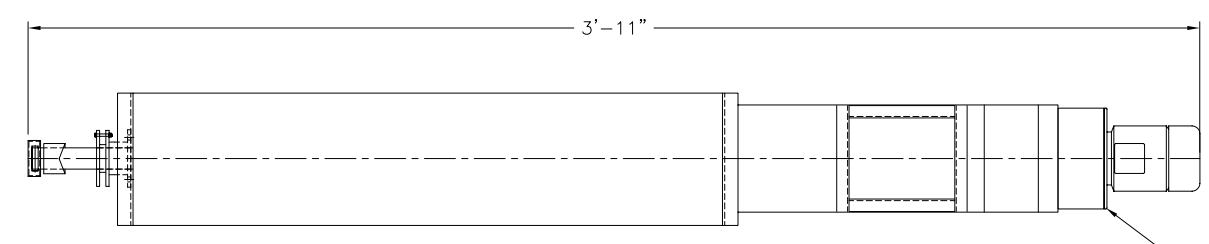
1. ALL SCREW CONVEYORS SHALL BE DESIGNED IN STRICT ACCORDANCE WITH CEMA 350
2. DIMENSIONAL STANDARDS SHALL COMPLY WITH CEMA 300 STANDARDS
3. CONVEYOR MANUFACTURER IS RESPONSIBLE FOR FINAL CONVEYOR SIZING AND HORSEPOWER DETERMINATION
4. CONVEYOR RPM SHALL NOT EXCEED 75% OF CEMA 350 TABLE 2-3 RECOMMENDATION. TROUGH LOADING SHALL BE 30% MAXIMUM.
5. CONVEYOR TROUGH SHALL BE FORMED FROM 3/16-INCH ASTM A514 STEEL PLATE WITH 3/8" THICK UHMW LINER
6. CONVEYOR INLETS AND DISCHARGES SHALL BE 1/4-INCH THICK ASTM A514 PLATE AND BE FLANGED AND GASKETED.
7. THERE SHALL BE NO FLIGHTING OVER DISCHARGE OPENING

8. CONVEYOR END PLATES SHALL BE MINIMUM 1/4" THICK A514 STEEL PLATE OR HEAVIER AS LISTED IN CEMA 300. PROVIDE GLAND TYPE PACKING AT TAIL END OF CONVEYOR
9. CONVEYOR DRIVE SHALL BE SHAFT MOUNTED GERMOTOR AGMA CLASS II WITH NEMA FRAME, PREMIUM EFFICIENCY, 1.15 SERVICE FACTOR, TEFC MOTOR. GEAR REDUCER SHALL HAVE A MINIMUM 1.4 SERVICE FACTOR BASED ON MOTOR NAMEPLATE HORSEPOWER. GERMOTOR SHALL BE PRE-FILLED WITH OIL PRIOR TO SHIPMENT.
10. ALL CARBON STEEL CONVEYOR COMPONENTS SHALL BE PAINTED OR HOT DIP GALVANIZED AFTER FABRICATION. PAINT SHALL SYSTEM SHALL INCLUDE ABRASIVE BLAST, 2.5 MILS DFT EPOXY PRIMER, AND 3.0 MILS POLYURETHANE ENAMEL TOPCOAT.
11. ALL BEARINGS, PACKINGS, DRIVES, MOTORS, AND ACCESSORIES SHALL BE FINISHED PAINTED WITH POLYURETHANE ENAMEL TO MATCH
12. PROVIDE TELEMECANIQUE SPEED SWITCH MODEL XSAV11801. MOUNT ZERO SPEED WITH STAINLESS STEEL BRACKET ON NON-DRIVEN END OF CONVEYOR.

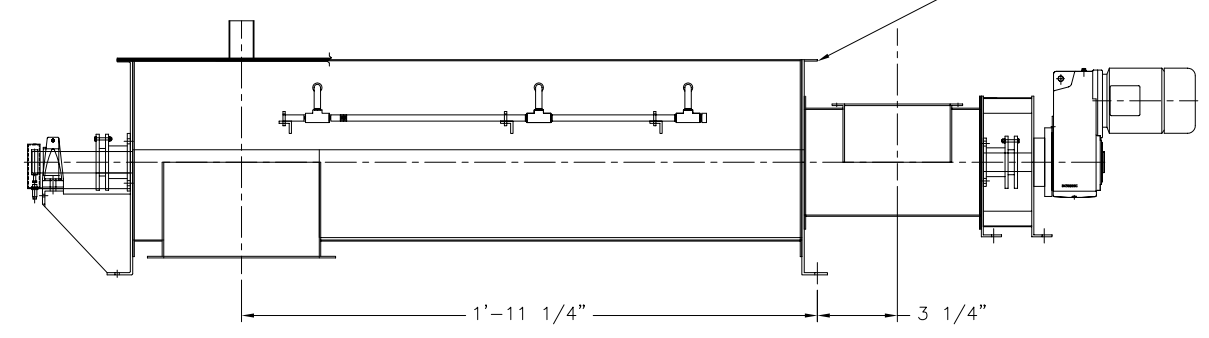
EQUIPMENT SPECIFICATIONS

MANUFACTURER	ANDRITZ
MODEL	14" PELLET OIL MIXER
MOTOR	5HP 460/3/60 TEFC
CAPACITY	50 TPH
SPEED	35 RPM
FLIGHTS	CONSTANT

TAG EQP'T 40.025.000



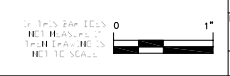
PLAN VIEW



ELEVATION VIEW

(2) TYP

THIS DRAWING IS COPY RIGHTED
 THIS DRAWING IS A TRADE SECRET AND ONLY ENTRUSTED TO THE RECEIVER FOR HIS PERSONAL USE. WITHOUT THE SIGNED WRITTEN CONSENT OF ANDRITZ-RUTHNER, INC., IT MUST NOT BE COPIED NOR MADE AVAILABLE TO THIRD PARTIES, INCLUDING COMPETITORS, NOR MADE ACCESSIBLE TO SUCH PARTIES. ANY ILLEGAL USE BY THE RECEIVER OR THIRD PARTIES FOR WHICH HE IS RESPONSIBLE CAN CONSTITUTE A CAUSE FOR LEGAL ACTION. THIS DRAWING MUST BE RETURNED ON REQUEST OF THE COMPANY.



DATE:	12/22/05	DATE:		DATE:	01/17/07	DATE:	06/05/06
DRAWN BY:	JEN	CHECKED BY:		APPROVED BY:		REV:	0
SCALE:	3/4" = 1'-0"	FILE:	152402500	TITLE:	UPDATE LAYOUT	REV:	1
PROJECT NUMBER:	1524	PROJECT:	DDS40	REVISION:	FOR FINAL REVIEW/BUILDING PERMIT	REV:	0
JOB NAME:	CITY OF STAMFORD CONNECTICUT SOLIDS DRYING PROJECT	TITLE:	SILO UNLOADING CONVEYOR (025) GENERAL ARRANGEMENT	REV:		REV:	
DRAWING NUMBER:	025-00	SHEET:	1 OF 1	REV:		REV:	