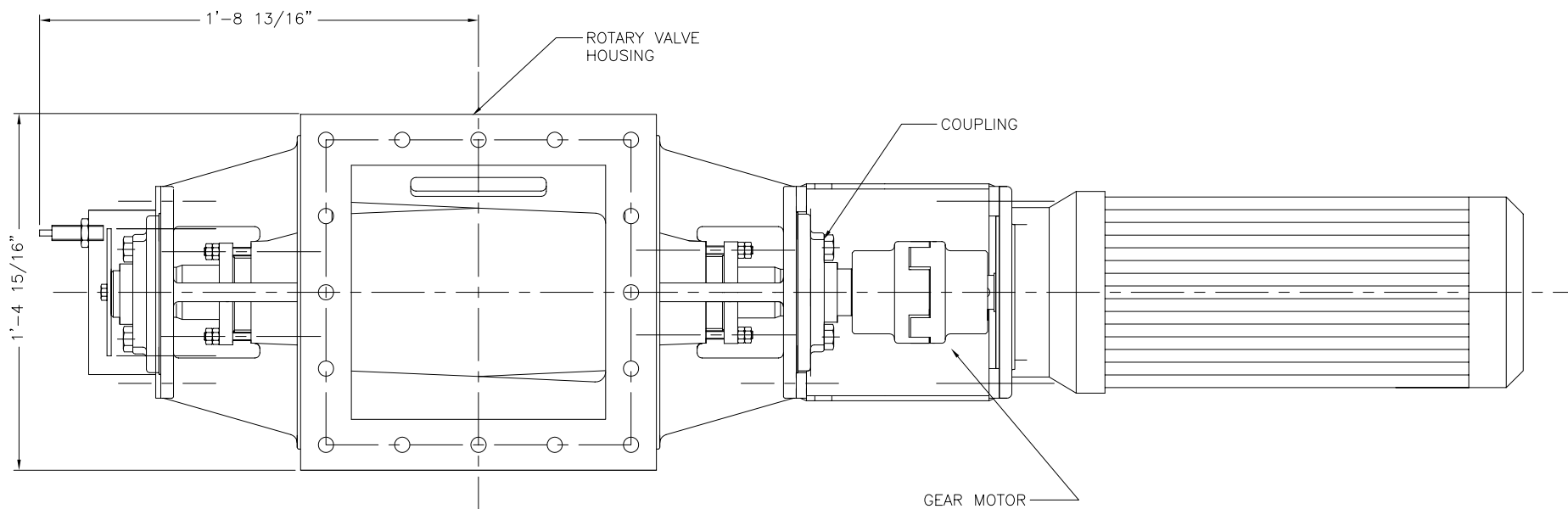
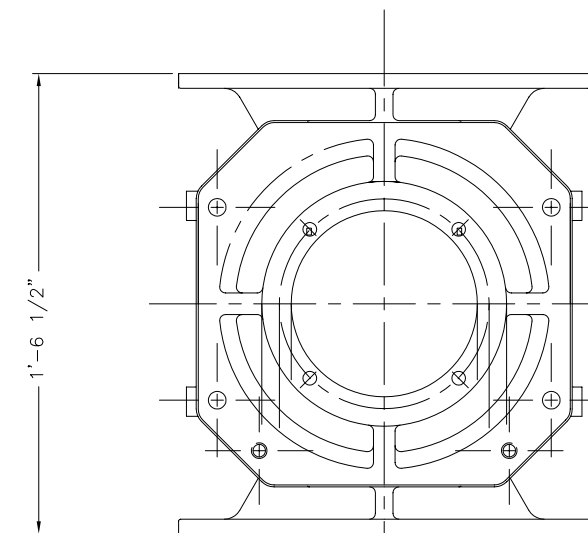


ELEVATION VIEW



PLAN VIEW



END VIEW

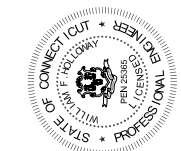
NOTES:

1. MATERIAL OF CONSTRUCTION: CAST IRON HOUSING w/ CHROME PLATED BORE. ROTOR, CARBON STEEL w/ ANTI-WEAR TIPS.
2. ROTARY VALVE SHALL BE PROVIDED WITH BOLTED INSPECTION HATCHES.
3. ROTOR SHAFTS SHALL BE SEALED WITH PACKING GLAND TO PREVENT DUST LEAKAGE.
4. FABRICATOR TO SUPPLY A TELEMACANIQUE XSAV ZERO SPEED SWITCH.
5. PAINT SPECIFICATIONS:
ROTARY VALVE SHALL BE SURFACE PREPARED AND PAINTED IN ACCORDANCE WITH MANUFACTURER'S STANDARD HEAVY DUTY ENAMEL FINISH.
6. VALVE TO INCLUDE SHAFT MOUNTED GEAR REDUCER. REDUCER SHALL HAVE A MINIMUM 1.5 SF BASED UPON MOTOR NAME PLATE HORSEPOWER.
7. MANUFACTURER TO TAG ALL COMPONENTS (BEFORE SHIPPING) FOR ASSEMBLY.

EQUIPMENT SPECIFICATIONS

MANUFACTURER JAUDT
 MODEL ZS ExZu 300x300/470
 MOTOR SEW 1.5HP 480/3/60 NEMA
 CAPACITY 1201 CUFT/HR @ 100% FILLING
 SPEED 21 RPM
 WEIGHT 675 LBS

TAG EQP'T 40.008.000



DATE:	12/20/05		
DRAWN BY:	JEN		
CHECKED BY:			
APPROVED BY:			
SCALE:	3" = 1'-0"		
FILE:	152400800		
SIZE:			
REV	0	DATE	01/16/07
1	0	REVISION	FOR FINAL REVIEW/BUILDING PERMIT

DDSD40

CITY OF STAMFORD CONNECTICUT
 SOLIDS DRYING PROJECT
 ROTARY AIR LOCK (008)
 GENERAL ARRANGEMENT
 PROJECT NUMBER 1524
 DRAWING NUMBER 008-00
 SHEET 1 OF 1

THIS DRAWING IS COPY RIGHTED AND IS THE PROPERTY OF ANDRITZ-RUTHNER, INC. IT IS NOT TO BE REPRODUCED OR TRANSMITTED IN ANY FORM OR BY ANY MEANS, ELECTRONIC OR MECHANICAL, INCLUDING PHOTOCOPYING, RECORDING, OR BY ANY INFORMATION STORAGE AND RETRIEVAL SYSTEM, WITHOUT THE WRITTEN PERMISSION OF ANDRITZ-RUTHNER, INC. ANY UNAUTHORIZED USE OF THIS DRAWING IS PROHIBITED AND WILL BE CONSIDERED A VIOLATION OF THE COPYRIGHT LAWS OF THE UNITED STATES OF AMERICA.

