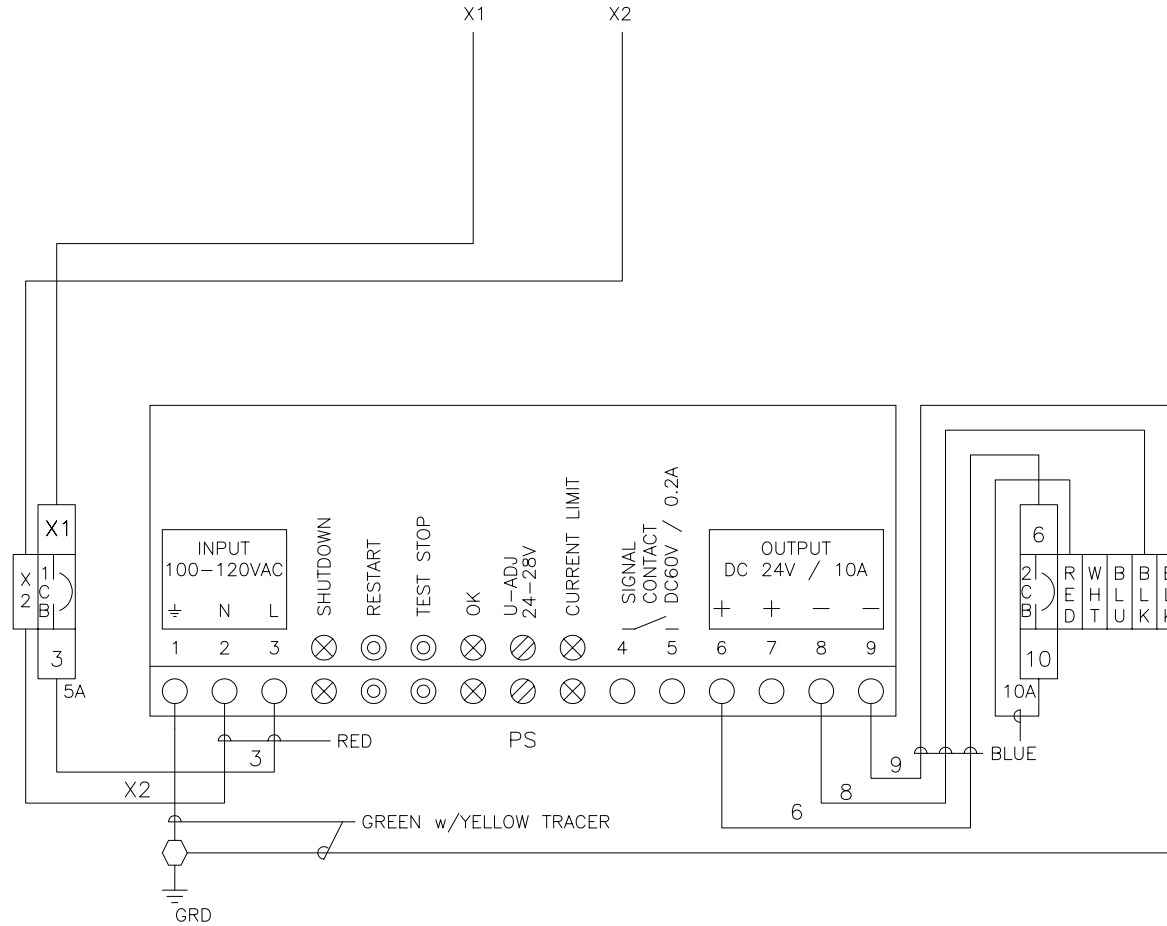


ATTENTION
 IF THE DEVICENET SYSTEM USES MORE THAN ONE POWER SUPPLY, THE V(-) CONDUCTOR OF ONLY ONE POWER SUPPLY SHOULD BE ATTACHED TO AN EARTH GROUND. IN THIS CASE REMOVE SUPPLIED #8 GREEN/YELLOW V(-) GROUND WIRE FROM ANY ADDITIONAL POWER SUPPLY UNITS AS APPLICABLE. SEE PUBLICATION DN-6.7.2 FOR MORE INFORMATION.

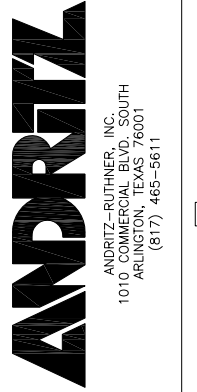
110/120V SEPARATE CONTROL
 CB6 LINE 70234 FOR DNPS #1 BUCKET 4L
 CB7 LINE 70237 FOR DNPS #2 BUCKET 12A



TYPICAL FOR:
 MCC-1

TORQUE ALL "FIELD" CONNECTIONS TO THE VALUE SPECIFIED IN THE FIELD WIRING TORQUE SPECIFICATION TABLE. ALL "FACTORY" WIRED CONNECTIONS HAVE BEEN PROPERLY TORQUED AND NO NEED TO BE CHECKED.

FACTORY WIRING TORQUE SPECS		FIELD WIRING TORQUE SPECS	
Power Supply	5 lb-in (0.6 Nm)	Power Supply	5 lb-in (0.6 Nm)
1492 Circuit Breakers	15 lb-in (1.7 Nm)	1492 Circuit Breakers	15 lb-in (1.7 Nm)
1492-W3TW Terminal Blocks	4 lb-in (0.5 Nm)	1492-W3TW Terminal Blocks	4 lb-in (0.5 Nm)
1492-W10 Terminal Blocks	13 lb-in (1.4 Nm)	1492-W10 Terminal Blocks	13 lb-in (1.4 Nm)



DATE:	12/27/05
DRAWN BY:	SSD
CHECKED BY:	
APPROVED BY:	
SCALE:	NONE
SIZE:	1524EP613
REV	0
REVISION	FOR FINAL REVIEW/BUILDING PERMIT
DATE	06/05/06

JOB NAME	CITY OF STAMFORD CONNECTICUT SOLIDS DRYING PROJECT
TITLE	DEVICENET POWER SUPPLY WIRING DIAGRAM
PROJECT NUMBER	1524
DRAWING NUMBER	EP-613
REV	0
SHEET	1 OF 1

RELEASED 12/08/06
 REVISION - 0



THIS DRAWING IS COPY RIGHTED FOR HIS PERSONAL USE WITHOUT THE SIGNED WRITTEN CONSENT OF ANDRITZ-RUTHNER, INC. IT MUST NOT BE COPIED NOR MADE AVAILABLE TO THIRD PARTIES. INCLUDING COMPETITORS, NOR MADE ACCESSIBLE TO SUCH PARTIES. ANY ILLEGAL USE BY THE RECEIVER OR THIRD PARTIES FOR WHICH HE IS RESPONSIBLE CAN CONSTITUTE A CAUSE FOR LEGAL ACTION. THIS DRAWING MUST BE RETURNED ON REQUEST OF THE COMPANY.